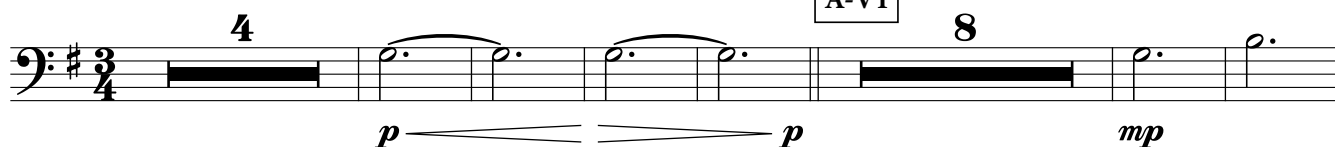


# Amazing Grace

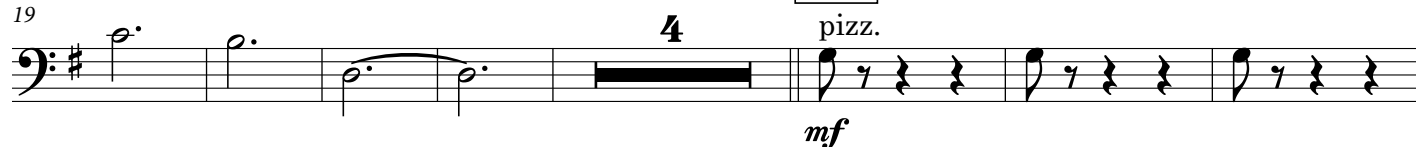
Flowing, not too slow ♩ = 92

A-V1



19

B-V2



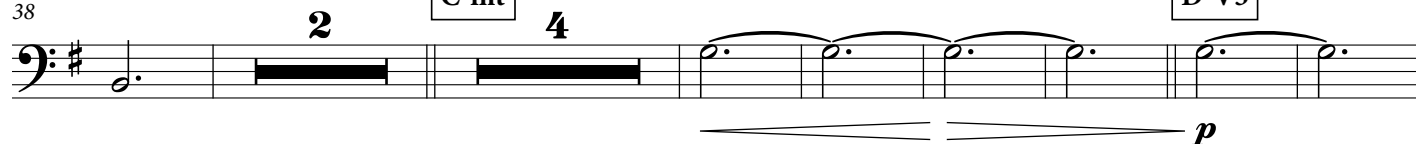
30



38

C-int

D-V3



51

poco rit

E-V4

Slower ♩ = 78

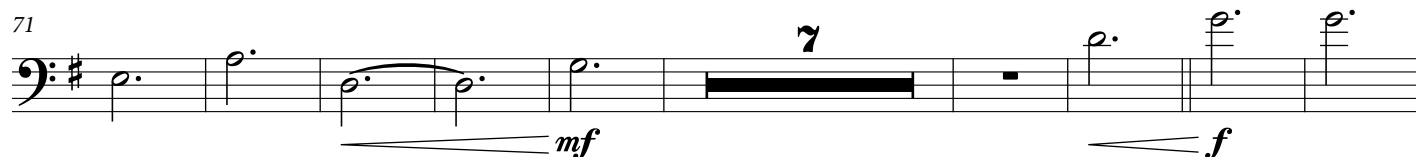


71

rit

F-V5

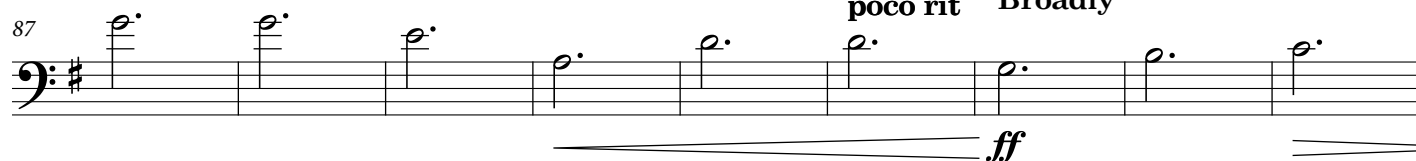
a tempo



87

poco rit

Broadly



96

molto rit

G-Outro

a tempo, not too slow

molto rit

